

INSTALLATION METHODS

Fastening Instructions

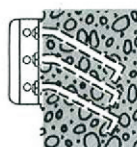
(See back page for more installation proposals)



Welded to channel (or steel faced dock). Note supporting rod underneath.



Welded to curb angle with one pre-set bolt (or lag and shield).



Pre-set bolts new concrete construction.



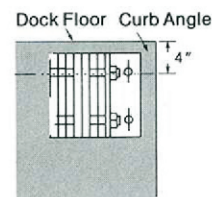
Lag bolts and shields for existing concrete.



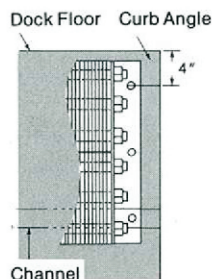
Lagged to timber or wood faced docks.



Weld

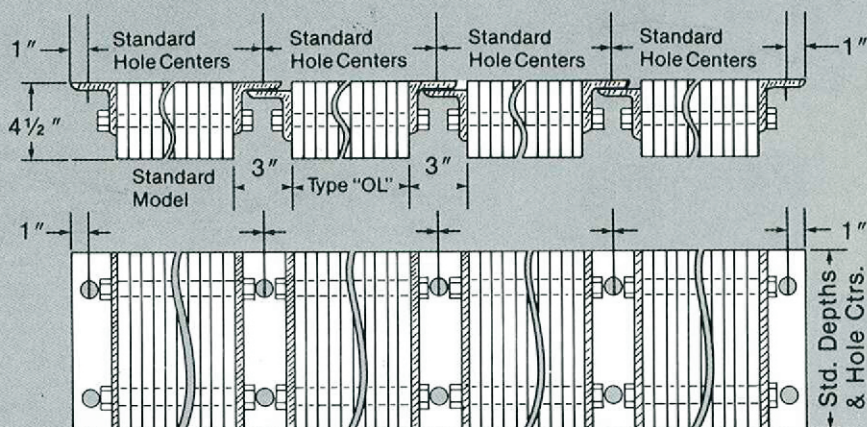


Horizontal

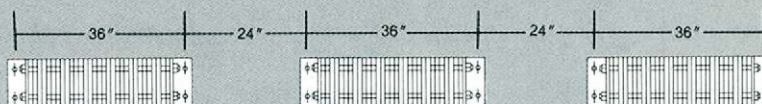


Vertical

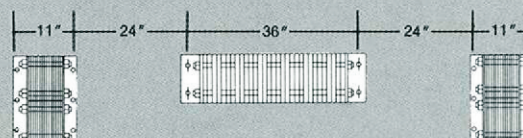
Overlap Method



Spacing Dock Bumpers for Maximum Protection



Installation using horizontal and vertical dock bumpers



Suggested dock bumper installation for individual bays

