

# LAMINATED / Dock Bumpers



## KEMPF LAMINATED DOCK BUMPERS ARE:

- Easily attached
- Absorb shock and impact
- Eliminate dock repair
- Extremely durable

Protect your docks and cargo from damage with Kempf Dock Bumpers. Even the strongest docks can crack under the force of backing trucks. Kempf Dock Bumpers have been designed, tested and engineered to withstand constant abrasion and shock for maximum protection of docks.

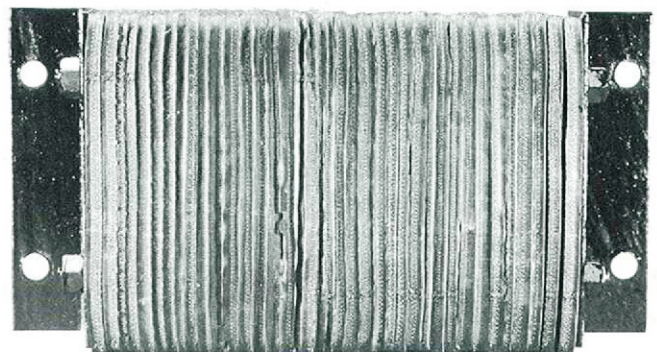
Kempf Dock Bumpers can be installed on new construction or can replace timbers or old bumpers. They are available in standard sizes or can be custom made to fit most installations.

In addition special attention is paid to construction where only uniformly skived materials are utilized.

## Architectural Specifications

The resilient rubber material of bumpers must be rubberized-fabric material cut to uniform size pads, either 4" x 10", 4.5" x 6", 10" or 12" and 6" x 10" or 12" thick (The thickness indicates how far the bumper will stand out from the dock). The 4" and 4.5" bumpers are closed with two 3" and 2.5" .25" structural angles. Bumpers pads are compressed under approximately 1500 pounds pressure. The anchor leg of angle on the 6" bumpers must extend 3" beyond the rubber surface at either end. Both size bumpers must contain two or three 13/16" anchor bolt holes. Bumpers are furnished with a coat of black primer paint on metal parts unless otherwise specified.

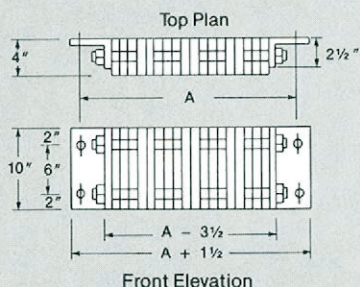
Flat end plates may be substituted for angles and galvanized steel components are also available upon request.





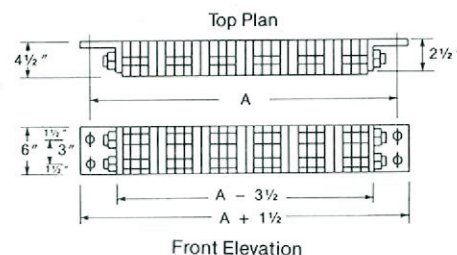
# DESIGN SPECIFICATIONS / Laminated Horizontal

## 4" x 10"



MODEL	SIZE	DIM. A	WEIGHT
LH412	4" x 10"	12"	24 lbs.
LH414	4" x 10"	14"	28 lbs.
LH418	4" x 10"	18"	35 lbs.
LH424	4" x 10"	24"	45 lbs.
LH436	4" x 10"	36"	67 lbs.

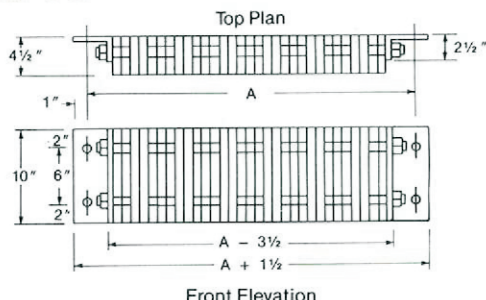
## 4 1/2" x 6"



MODEL	SIZE	DIM. A	WEIGHT
LH4612	4 1/2" x 6"	12"	16 lbs.
LH4618	4 1/2" x 6"	18"	24 lbs.
LH4624	4 1/2" x 6"	24"	32 lbs.
LH4636	4 1/2" x 6"	36"	47 lbs.

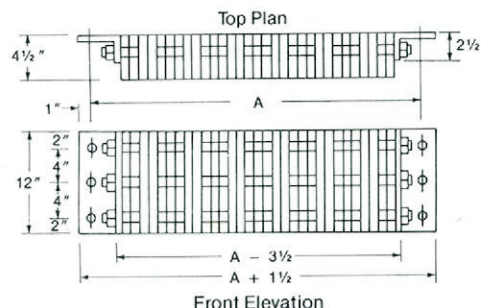
Dimension "A" is distance between center lines of anchor bolt holes.

## 4 1/2" x 10"



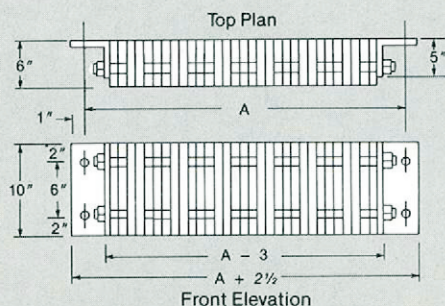
MODEL	SIZE	DIM. A	WEIGHT
LH1012	4 1/2" x 10"	12"	26 lbs.
LH1014	4 1/2" x 10"	14"	28 lbs.
LH1018	4 1/2" x 10"	18"	40 lbs.
LH1024	4 1/2" x 10"	24"	52 lbs.
LH1036	4 1/2" x 10"	36"	80 lbs.

## 4 1/2" x 12"



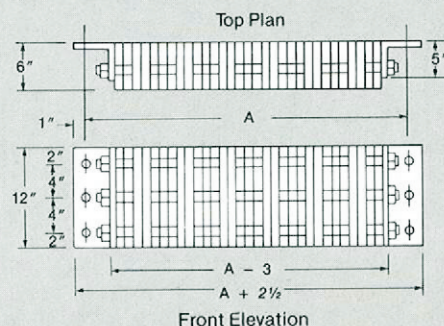
MODEL	SIZE	DIM. A	WEIGHT
LH1212	4 1/2" x 12"	12"	31 lbs.
LH1214	4 1/2" x 12"	14"	37 lbs.
LH1218	4 1/2" x 12"	18"	48 lbs.
LH1224	4 1/2" x 12"	24"	62 lbs.
LH1236	4 1/2" x 12"	36"	100 lbs.

## 6" x 10"



MODEL	SIZE	DIM. A	WEIGHT
LH612	6" x 10"	12"	30 lbs.
LH614	6" x 10"	14"	35 lbs.
LH618	6" x 10"	18"	45 lbs.
LH624	6" x 10"	24"	66 lbs.
LH636	6" x 10"	36"	92 lbs.

## 6" x 12"

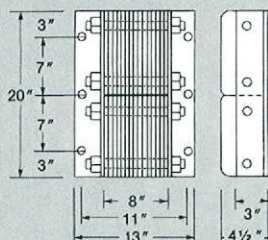


MODEL	SIZE	DIM. A	WEIGHT
LH61212	6" x 12"	12"	41 lbs.
LH61218	6" x 12"	18"	55 lbs.
LH61224	6" x 12"	24"	80 lbs.
LH61236	6" x 12"	36"	110 lbs.



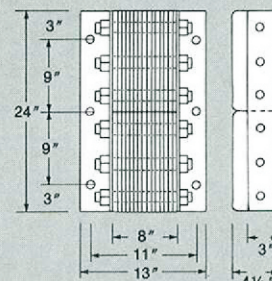
# DESIGN SPECIFICATIONS / Laminated Vertical

**4½" x 20"** Kempf laminated vertical bumpers are recommended for use where docks need protection from varying truck bed heights. For a complete system of protection they are often used in conjunction with laminated horizontal bumpers.



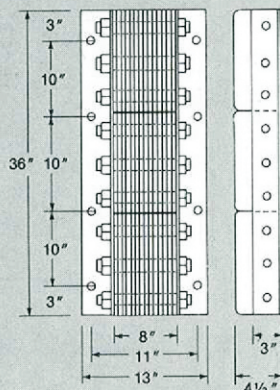
**MODEL** LV-20 **WEIGHT** 48 lbs.

**4½" x 24"**



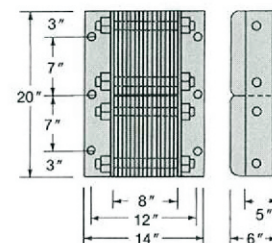
**MODEL** LV-24 **WEIGHT** 68 lbs.

**4½" x 36"**



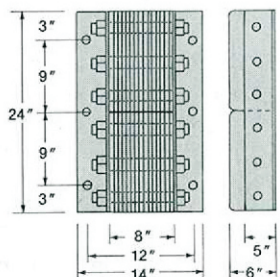
**MODEL** LV-36 **WEIGHT** 100 lbs.

**6" x 20"** The thick 6" bumpers are recommended to prevent excessive compression of dock shelters and seals. They also prevent damage to upper building walls when the dock approaches are on a decline. They may also be combined with horizontal bumpers for more thorough protection.



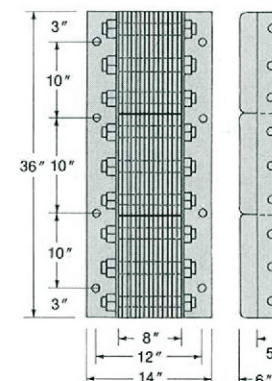
**MODEL** LV6-20 **WEIGHT** 60 lbs.

**6" x 24"**



**MODEL** LV6-24 **WEIGHT** 80 lbs.

**6" x 36"**



**MODEL** LV6-36 **WEIGHT** 120 lbs.